



SERIES 110

1-1/2" x 1-1/4" End Suction Centrifugal Pump

The SERIES 110 End Suction Centrifugal Pump is designed for high-capacity performance combined with exceptional reliability. It features a close-coupled configuration to standard NEMA "C" face motors, ensuring easy installation and simplified servicing. Its open adapter design provides added protection for the motor, contributing to extended durability.

Built from rugged materials such as cast iron, bronze, or aluminum, this pump offers versatility for handling a wide variety of liquids. To resist corrosion, stainless steel fasteners are used throughout, making it suitable for demanding environments. Precision-balanced impellers enhance efficiency and help prolong bearing life, delivering a cost-effective solution for numerous applications.

The standard mechanical seal—carbon/ceramic/Viton—is self-adjusting and corrosion-resistant, capable of managing most liquid types. For added convenience, fully tested "Wet End" PumPAKs are available with or without motors, enabling quick mounting to standard "C" frame motors in just minutes.

SPECIFICATIONS:

Suction / Discharge	1-1/2" x 1-1/4" NPT
Materials of Construction	Bronze, Cast iron
Flow	Up to 130 GPM (29.5 m ³ /h)
Head Feet	Up to 60' (42 m)
Impeller	4" (101.6 mm) semi-open
Motor	Up to 2 HP (1.47 kW)
Seal	Special seal material combinations available (consult factory), Standard carbon / ceramic / Viton
Drive Options	Close coupled 56C Close coupled 145TC Pedestal PumPAK® (without motor)
Max Solid Size	.32" (8.1 mm)

Application:

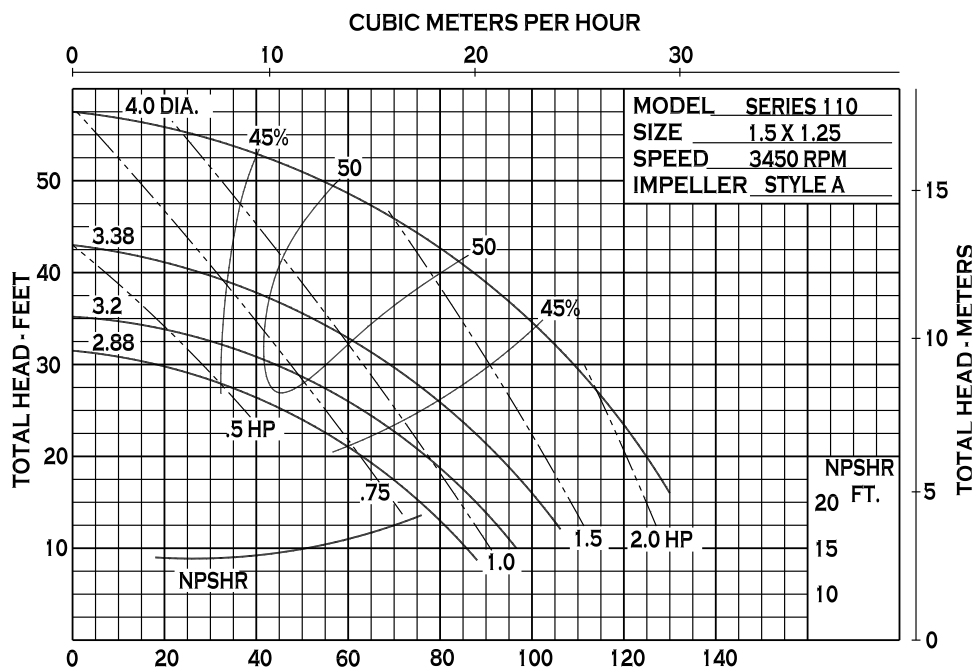
- Agricultural
- Commercial
- Industrial
- OEM



An Ingersoll Rand Business

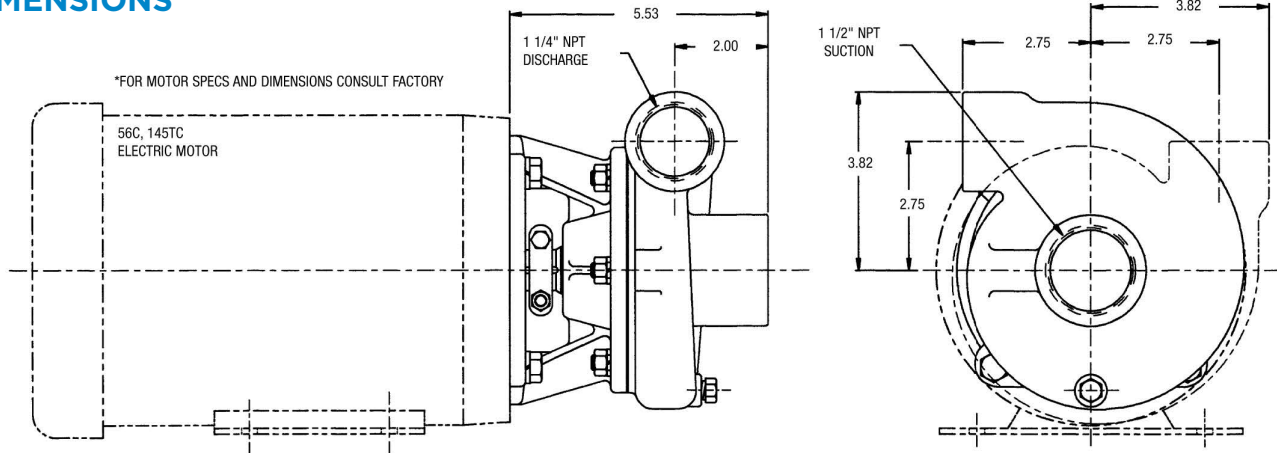
SERIES 110

PERFORMANCE CURVES

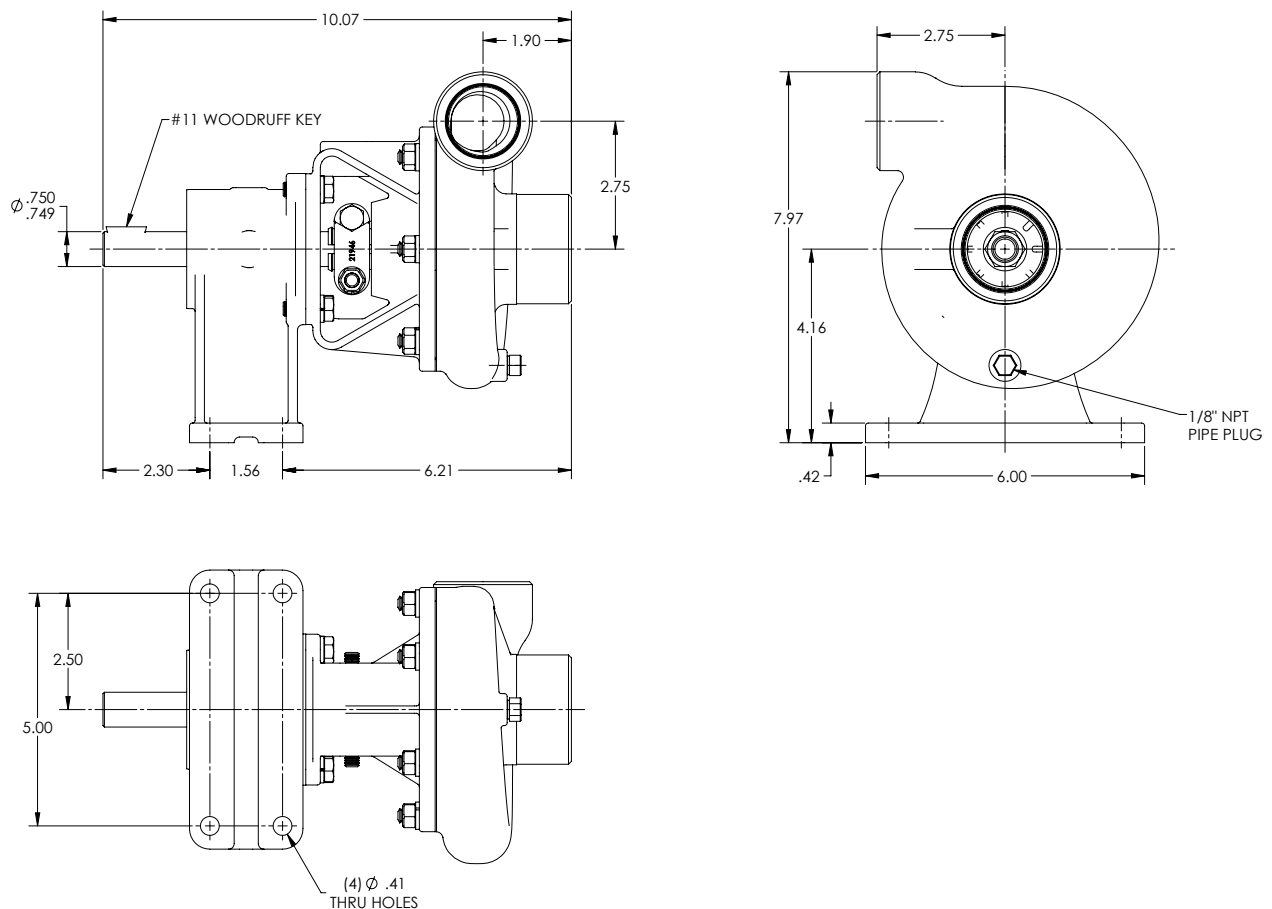


12500 South Pulaski Road
Alsip, IL 60803, USA
Phone (800) 563-8006

DIMENSIONS



S110PMP C:PED 1.5X1.25 4.0R (MP23250)



* For complete parts lists and troubleshooting guidance, please refer to the MP Pumps Installation Operation & Maintenance (IOM) Manual.